

3form | studio

wave wall by [wovin]



wave wall™



wave wall™

flexible modularity

introduce
captivating curves

Wave Wall by [wovin] is an undulating wave of elegantly long, beautiful tile finishes, available in either a continuous or alternating pattern. Tiles are positioned within grooved aluminum extrusions, forming a lightweight framework. Wave Wall is modular, making it easy to transport and install.





FIRM: **Wovin** PHOTOGRAPHY: **Richard Gates** MATERIAL: **HighRes**

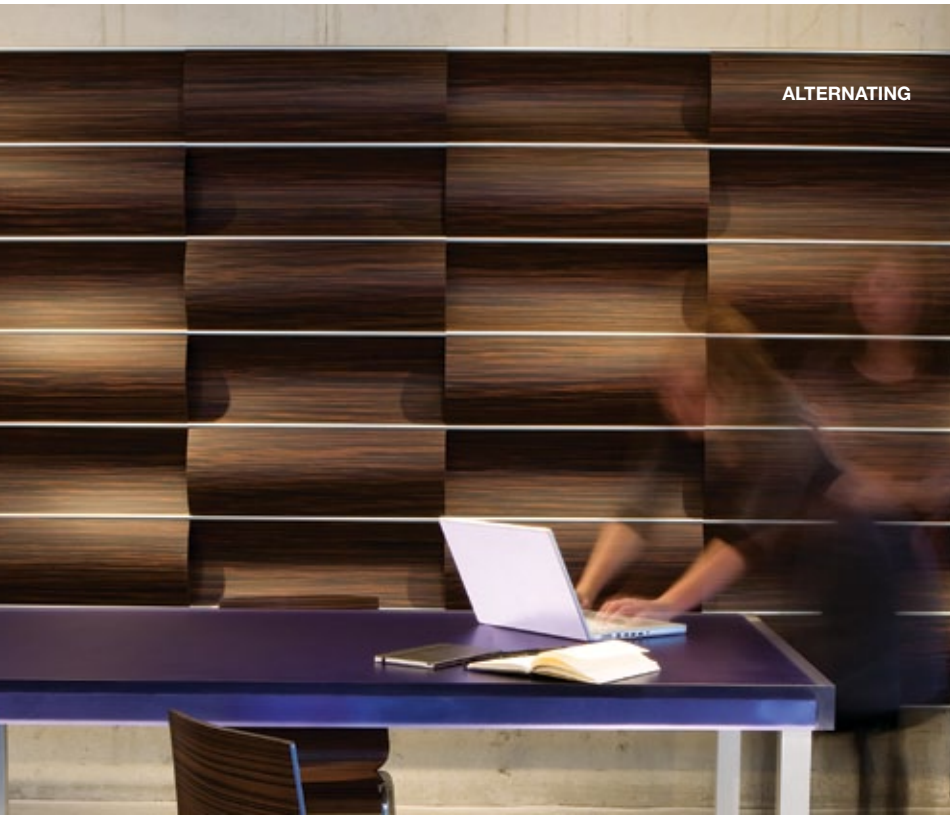


so many
possibilities...

With a vast array of finishes from metallic to HighRes Imagery, and either horizontal or vertical orientation, Wave Wall offers boundless design freedom.

FIRM: **3form Studio** LOCATION: **Salt Lake City, UT** PHOTOGRAPHY: **Kirsten Hepburn** MATERIAL: **Anodized Aluminum | Copper**

FIRM: 3form Studio LOCATION: Salt Lake City, UT
PHOTOGRAPHY: Skylar Nielsen MATERIAL: Wood Veneer | Ebony



ALTERNATING

continuous or alternating design

The smoothly contoured panels can be configured in a continuous pattern or create an alternating aesthetic.

CONTINUOUS



FIRM: 3form Studio LOCATION: Salt Lake City, UT PHOTOGRAPHY: Skylar Nielsen MATERIAL: Wood Veneer | Black Oak

Step 1

Choose from 100+ pre-packaged solutions

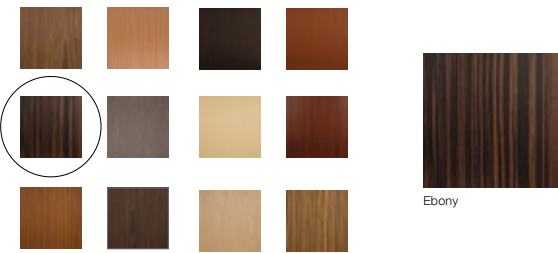
Easy-to-install, contemporary, modular wall feature

300.07.WV wood veneer



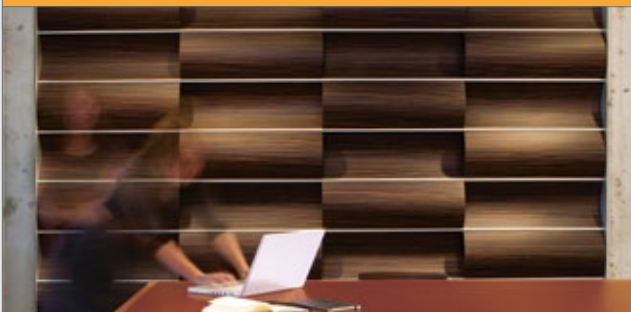
Step 2

Refine the material details for your solution.



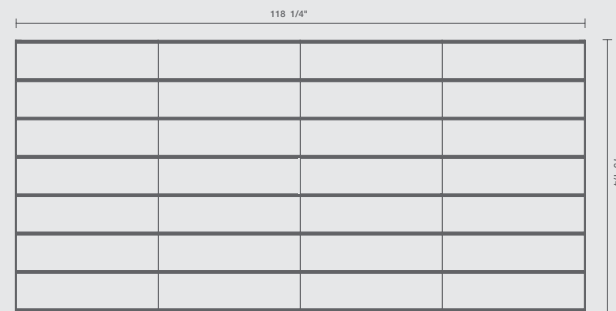
Step 3

Contact your Sales Rep to order **800.726.0126**



Easy-to-install, contemporary, modular wall feature

300.07.01	variaecoresin®
300.07.AL	aluminum
300.07.CL	color laminate
300.07.PR	polyresin
300.07.WV	wood veneer



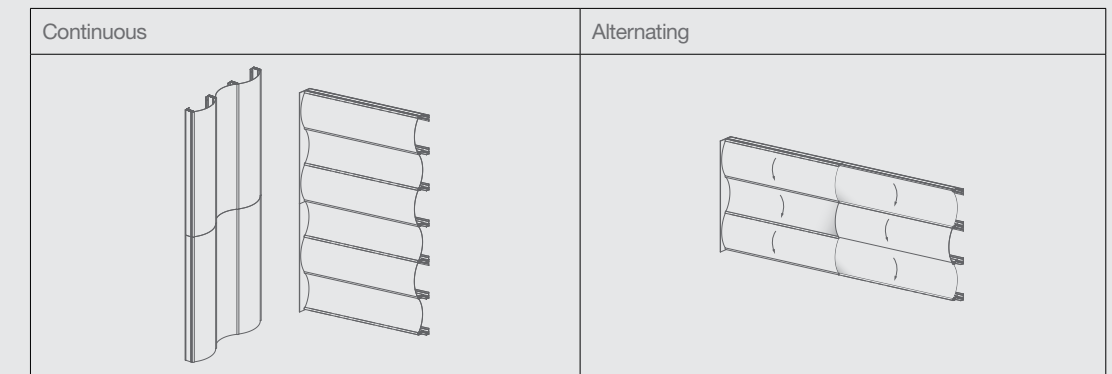
DETAILS

- 7 tiles tall x 4 tiles wide, 1/16" gauge tiles
- Installs in continuous or alternating configurations
- Extremely easy to install
- Easy to change out tiles as design dictates
- Select from a variety of 3form® design options:
 - Aluminum, available in five finishes
 - Wood Veneer, available in twelve premium finishes
 - C3® available in more than 10,000 options or combinations
 - Polyresin, available in eleven colors
 - Color Laminate, available in four finishes
- 3 week lead time

Material Details

Wave Wall tiles can be installed in either an alternating formation for a textured, billowing appearance or in a continuous formation for flowing motion.

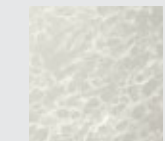
Configurations



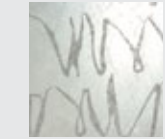
Varia Ecoresin



Courier + Ghost



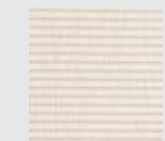
Mari Seamless + Ghost



Script + Ghost



Spider + Ghost



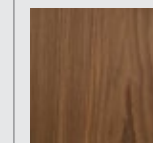
Tanaka + Ghost



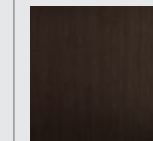
C3

C3 is the subject of one or more patents pending

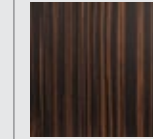
Wood Veneer



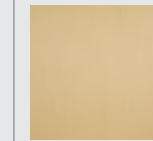
American Walnut Crown



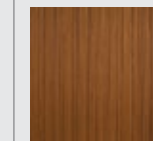
Black Oak



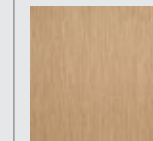
Ebony



Maple

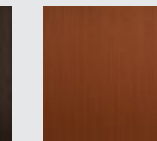
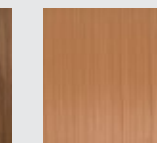


Teak Sabbiata



White Oak

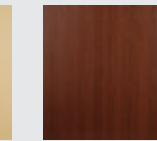
Asian Cherry



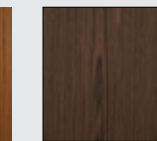
Cherry



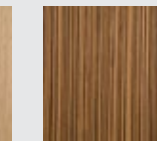
Gray Oak



Old English Mahogany

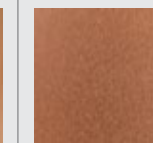


Wenge Crown

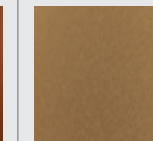


Zebra Wood

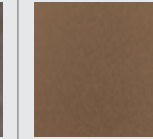
Anodized Aluminum



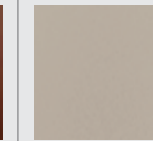
Copper



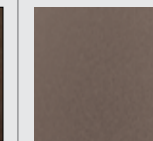
Gold



Light Bronze

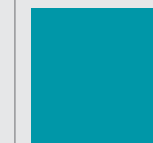


Natural

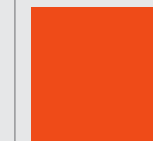


Smoke

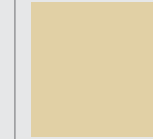
Polyresin



Caribbean



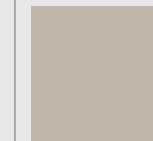
Flame



String



Jet



Concrete



Chill

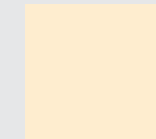
Cerulean



Cerulean



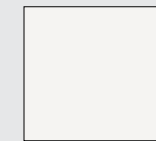
Matador



Frappe



Graphite



Whip

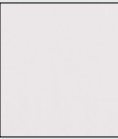
Color Laminate



Black Brushed



Red Brushed



White Brushed



White Gloss

About 3form®

BREAKTHROUGH PRODUCTS

From materials that break the mold, hardware solutions that simplify installations, to one-stop solutions that provide instant design possibilities, 3form has created a breadth and depth of offerings that make the connection from inspiration to installation seamless and uniquely yours.

COMMITTED PEOPLE

3form employees are a passionate, dedicated and knowledgeable group ready to assist you with simple design specification as well as the most complex custom design solutions. Our cross-functional team of trained architects, material engineers, and project experts, familiar with the unique properties of 3form materials, will realize and expand your innovative vision.

BETTER PLANET

Exceeding industry expectations, 3form has distinctively aggressive goals for minimizing the impact of not only our products, but our processes. Our Path to Zero goals are a commitment to continually reducing our overall environmental footprint toward the ultimate goal of total sustainability.

About 3form® Studio

3form Studio is a collection of striking, easy-to-install, 3-dimensional solutions. Transform walls with Wovin Wall, Wave Wall, or Ripple Wall. Develop artistic partitions with modular Ditto or innovative Parametre. Add subtle privacy to glazing installations with GECKO, or create a stunning centerpiece with Poured Glass. Bring your spaces to life and inject unique beauty with 3form Studio products.

Please visit 3-form.com/studio for more information.

Wovin Wall is a registered trade mark.

Wave Wall is the subject of one or more patents pending.

Wave Wall is manufactured in the US under license to Wovin Wall Pty Ltd.



3-form.com | 800.726.0126