

3form | studio

wovin wall by [wovin]

wovin wall™

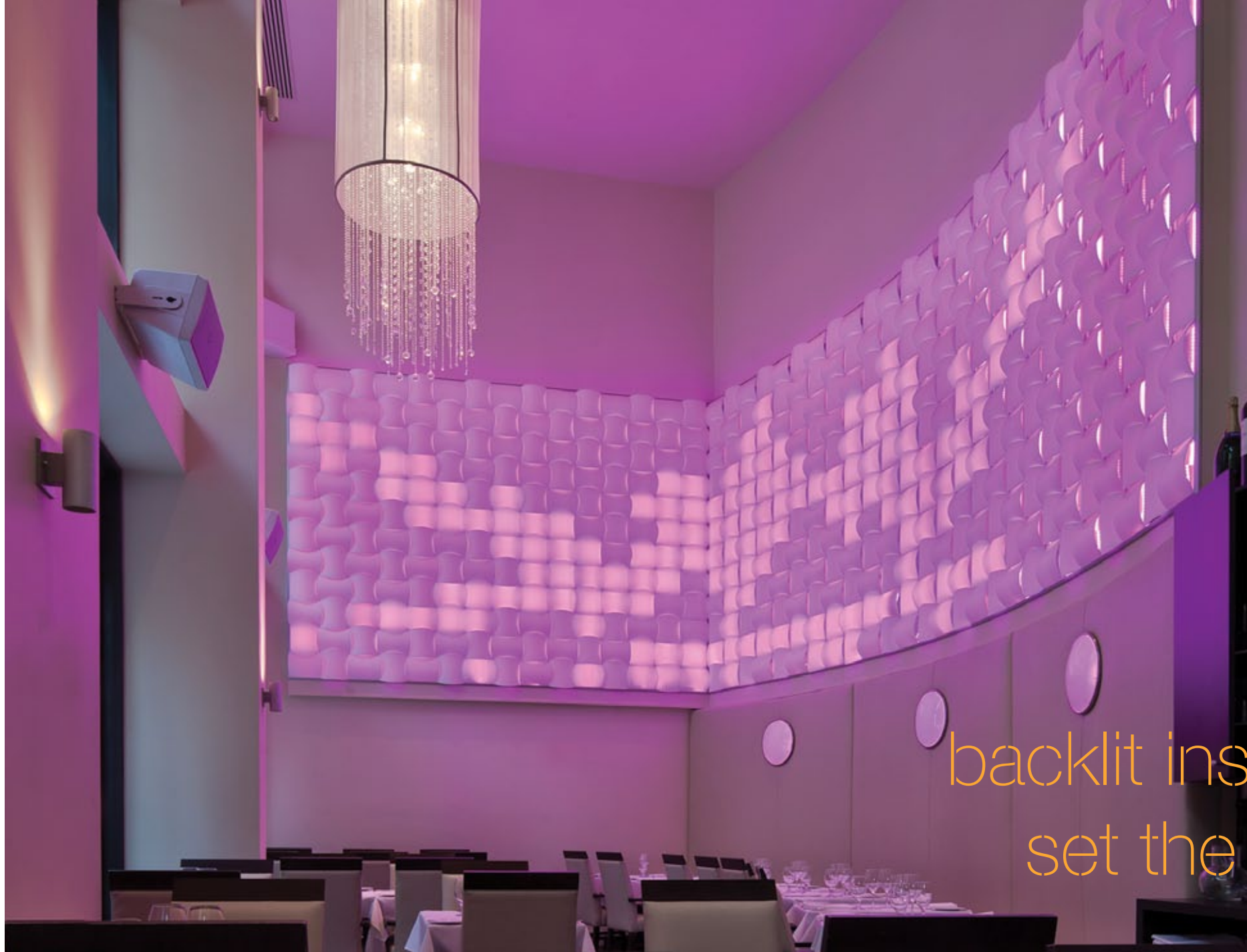
wovin wall™  
—  
flexible modularity



# contemporary design solutions for interior walls and ceilings

Wovin Wall by [wovin] is a modular system you can extend in any direction to suit your space. The modular nature of Wovin Wall makes it the perfect medium to reflect new color schemes, product launches or seasonal changes. Wovin Wall is available in a wide variety of standard finishes — or customizable to meet your design vision.



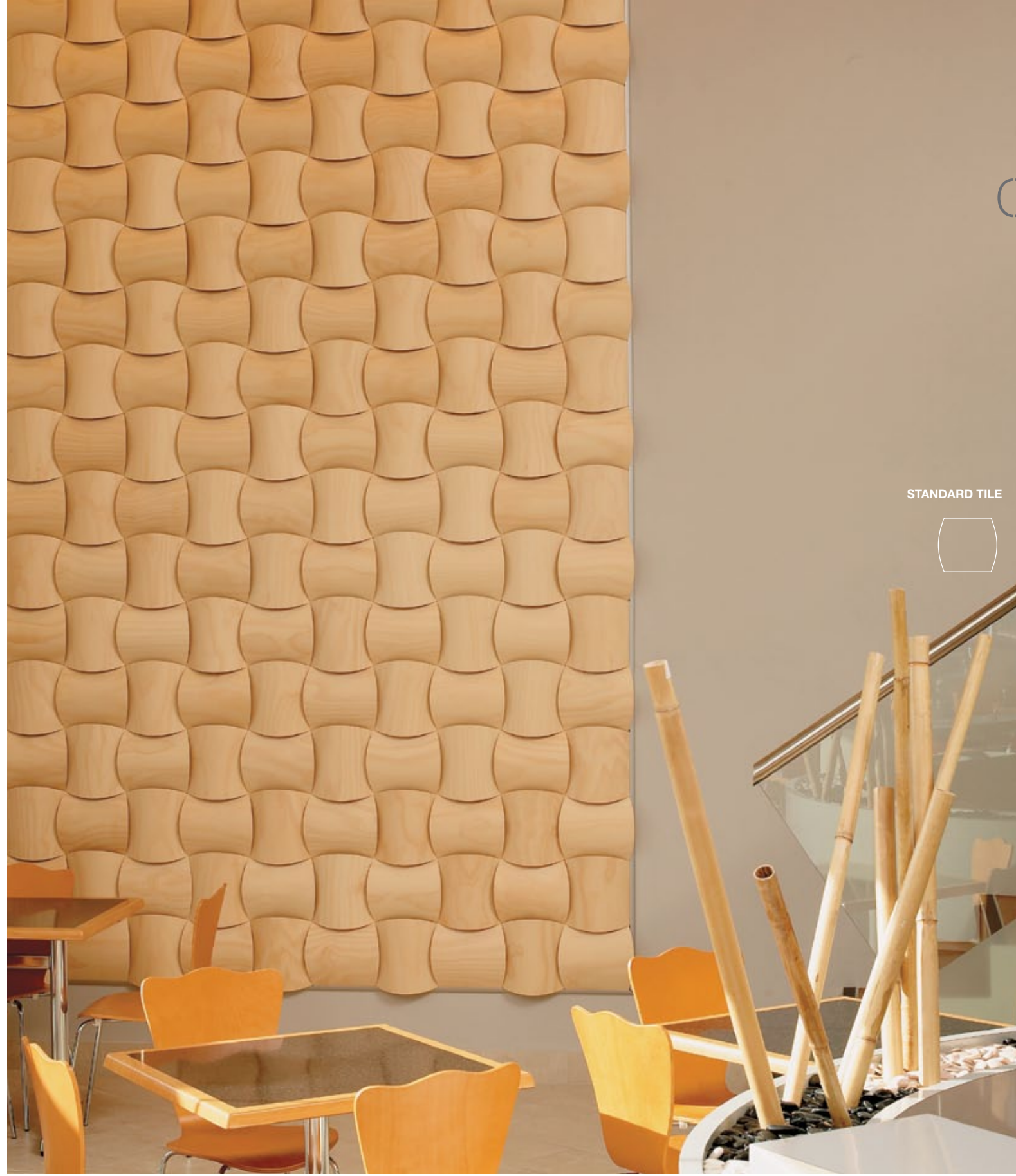


## backlit installations set the mood

Take advantage of the translucence of 3form materials by backlighting Wovin Wall to dramatic effect. Using variable-color LED lighting can provide myriad opportunities to characterize your space.







# develop rich environments with ease

STANDARD TILE



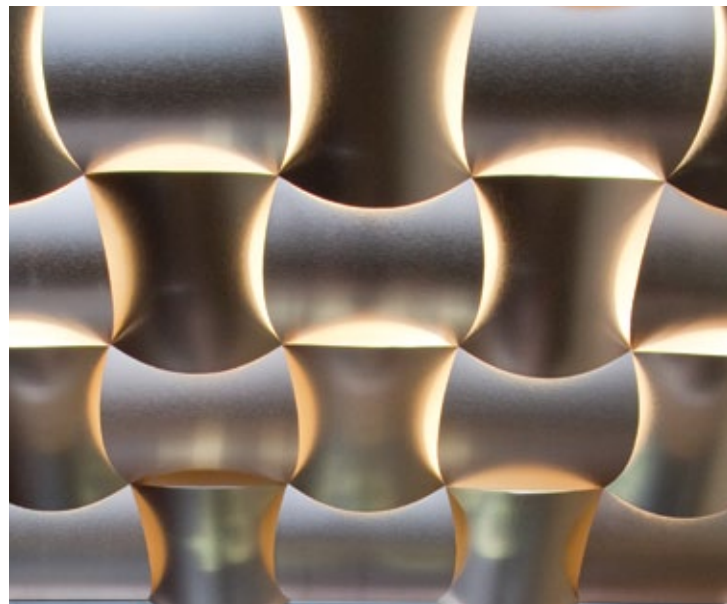
Use standard or oval-shaped tiles for a distinctive pattern that's simple to put together. Install using the lightweight mounting grid, slipping the Wovin tiles into the grid in alternating directions to create the woven pattern. Wovin Wall can be installed without edging, or with Standard or Deluxe Edging in clear anodized aluminum.

OVAL TILE



create vivid, remarkable  
entries and canopies

Wovin Wall tiles can be designed in 3form C3 Color, Wood Veneer, Polyresin, Color Laminate and Anodized Aluminum. They can also be made from custom materials – the possibilities are endless.

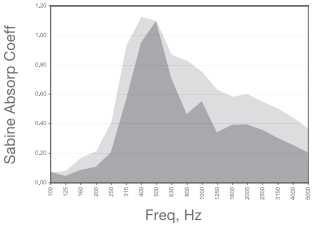


PROJECT: 139 Centre Street FIRM: Vandeburg Architects LOCATION: New York, NY PHOTOGRAPHY: Anne Fletcher MATERIAL: Anodized Aluminum | Copper



proven acoustic performance with style and function

Absorb harsh echoes and empty ringing sounds in lobby areas, corridors, cafeterias, restaurants, offices or auditoriums.

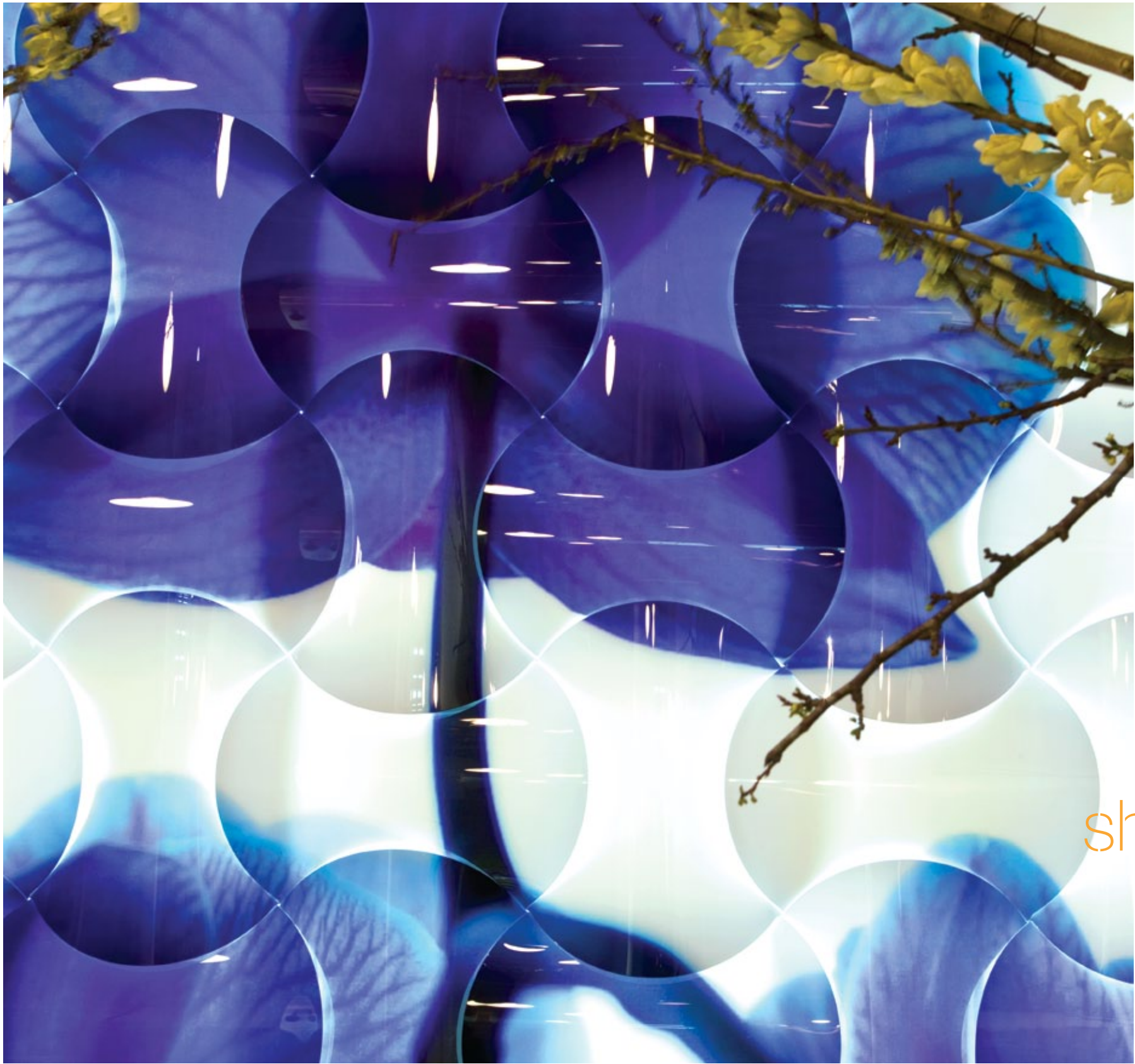


The vocal noises in interior spaces (in the medium frequencies - 500 - 1000Hz) are significantly lessened by Wovin Wall. Complete test certificates are available upon request.



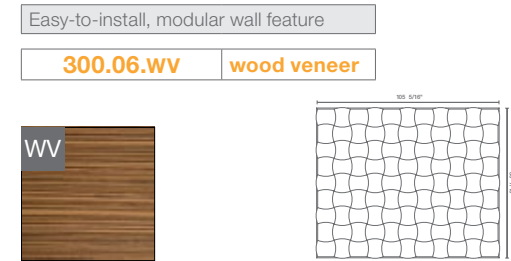
Choose HighRes technology for larger-scale installations to provide a powerful visual impact. HighRes offers precise panel-to-panel registration and design flexibility.

showcase premium quality imagery



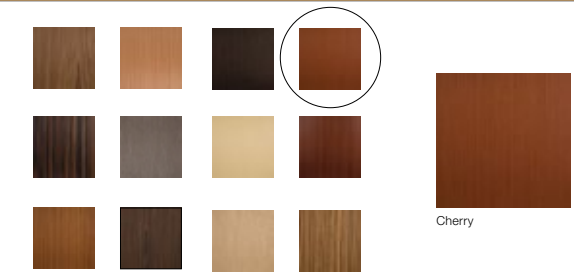
## Step 1

Choose from 100+ pre-packaged solutions



## Step 2

Refine the material details for your solution.



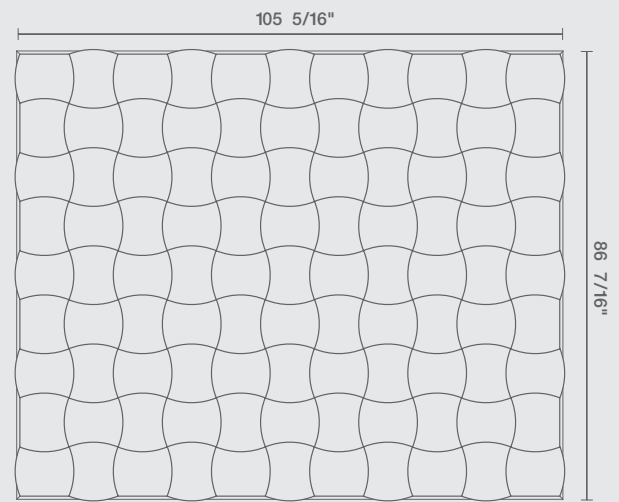
## Step 3

Contact your Sales Rep to order **800.726.0126**



Easy-to-install, modular wall feature

<b>300.06.01</b>	<b>variaecoresin®</b>
<b>300.06.AL</b>	<b>aluminum</b>
<b>300.06.CL</b>	<b>gloss laminate</b>
<b>300.06.PR</b>	<b>polyresin</b>
<b>300.06.WV</b>	<b>wood veneer</b>



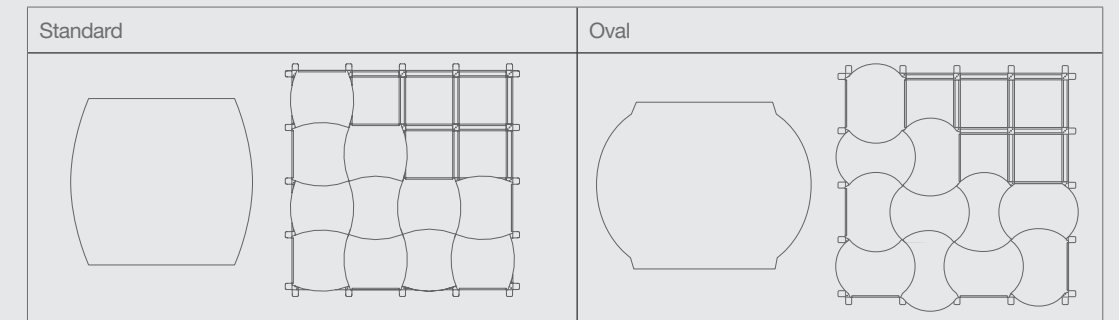
### DETAILS

- 9 tiles tall x 11 tiles wide, 1/16" gauge tiles
- Strong acoustical properties
- Extremely easy to install
- Standard frame and tile shape
- Easy to change out tiles as design dictates
- Select from a variety of 3form® design options:
  - Aluminum, available in five finishes
  - Wood Veneer, available in twelve premium finishes
  - C3® available in more than 10,000 options or combinations
  - Polyresin, available in eleven colors
  - Color Laminate, available in four finishes
- 3 week lead time

# Material Details

Wovin Wall is available in two tile shapes for different stylish and three-dimensional effects.

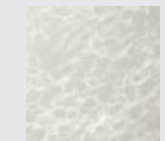
## Tile Shapes



### Varia Ecoresin



Courier + Ghost



Mari Seamless + Ghost



Script + Ghost



Spider + Ghost



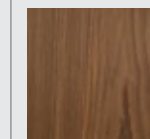
Tanaka + Ghost



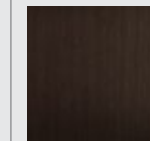
C3

C3 is the subject of one or more patents pending

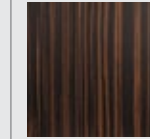
### Wood Veneer



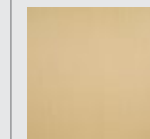
American Walnut Crown



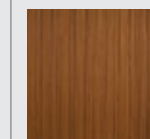
Black Oak



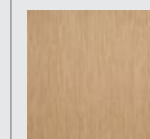
Ebony



Maple

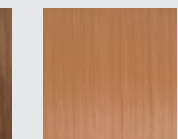


Teak Sabbia

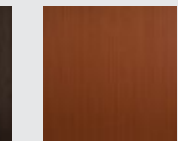


White Oak

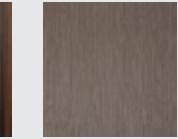
### Asian Cherry



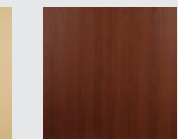
Asian Cherry



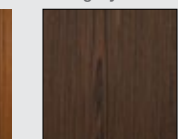
Cherry



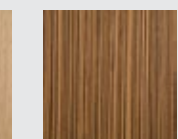
Gray Oak



Old English Mahogany

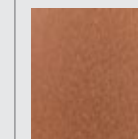


Wenge Crown

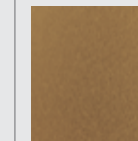


Zebra Wood

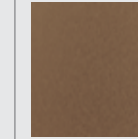
### Anodized Aluminum



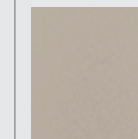
Copper



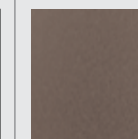
Gold



Light Bronze

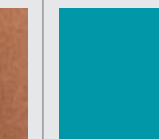


Natural

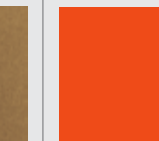


Smoke

### Polyresin



Caribbean



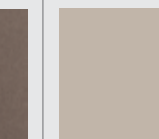
Flame



String



Jet



Concrete



Chill

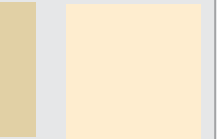
### Cerulean



Cerulean



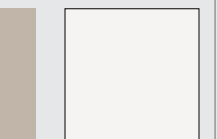
Matador



Frappe



Graphite



Whip

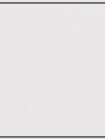
### Color Laminate



Black Brushed



Red Brushed



White Brushed



White Gloss

## About 3form®

---

### **BREAKTHROUGH PRODUCTS**

From materials that break the mold, hardware solutions that simplify installations, to one-stop solutions that provide instant design possibilities, 3form has created a breadth and depth of offerings that make the connection from inspiration to installation seamless and uniquely yours.

### **COMMITTED PEOPLE**

3form employees are a passionate, dedicated and knowledgeable group ready to assist you with simple design specification as well as the most complex custom design solutions. Our cross-functional team of trained architects, material engineers, and project experts, familiar with the unique properties of 3form materials, will realize and expand your innovative vision.

### **BETTER PLANET**

Exceeding industry expectations, 3form has distinctively aggressive goals for minimizing the impact of not only our products, but our processes. Our Path to Zero goals are a commitment to continually reducing our overall environmental footprint toward the ultimate goal of total sustainability.

## About 3form® Studio

---

3form Studio is a collection of striking, easy-to-install, 3-dimensional solutions. Transform walls with Wovin Wall, Wave Wall, or Ripple Wall. Develop artistic partitions with modular Ditto or innovative Parametre. Add subtle privacy to glazing installations with GECKO, or create a stunning centerpiece with Poured Glass. Bring your spaces to life and inject unique beauty with 3form Studio products.

---

Please visit [3-form.com/studio](http://3-form.com/studio) for more information.

Wovin Wall is the subject of U.S. Patent No. 7,784,229  
Wovin Wall is manufactured in the US under license to Wovin Wall Pty Ltd.



3-form.com | 800.726.0126