

## KEYED NOTES

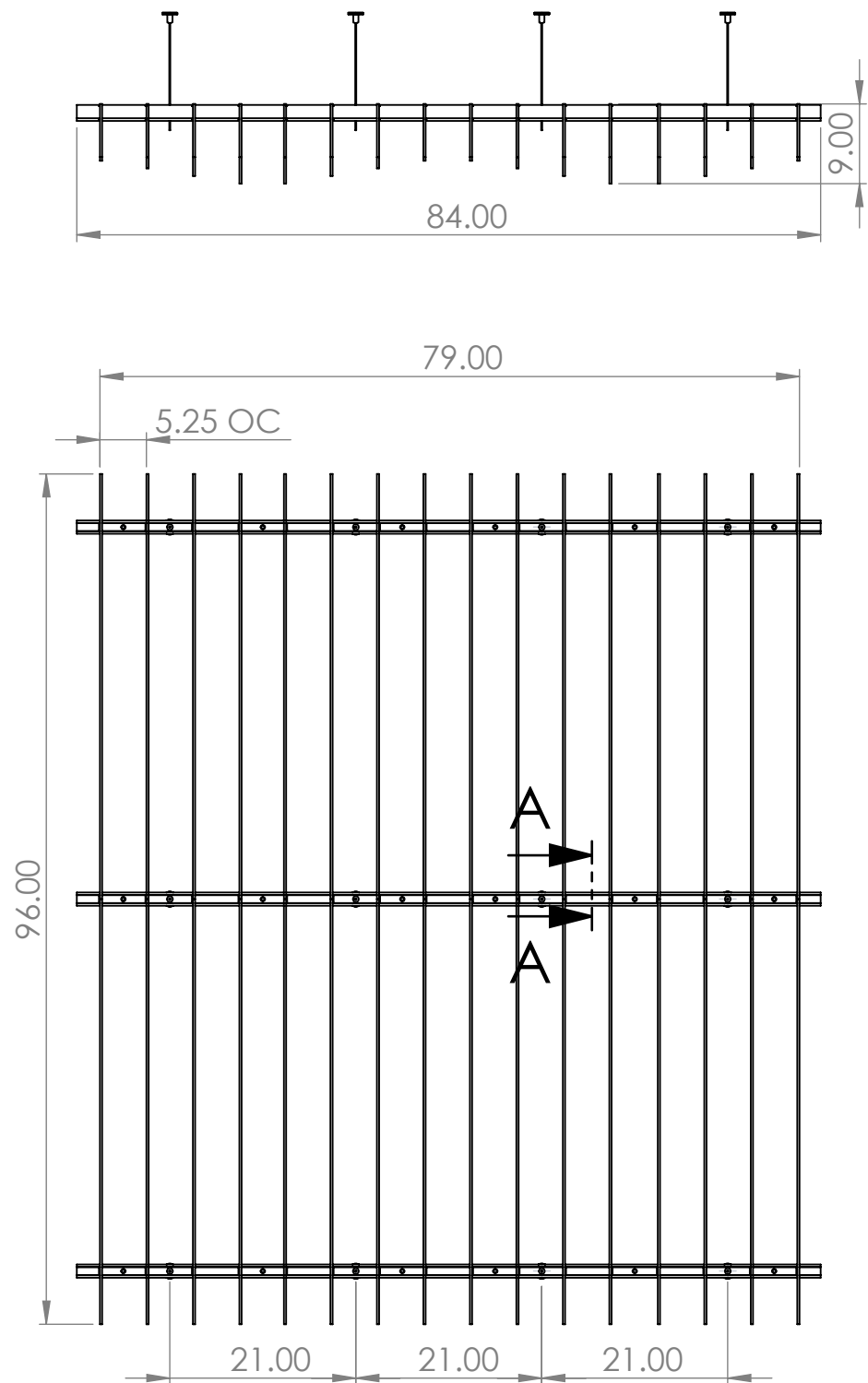
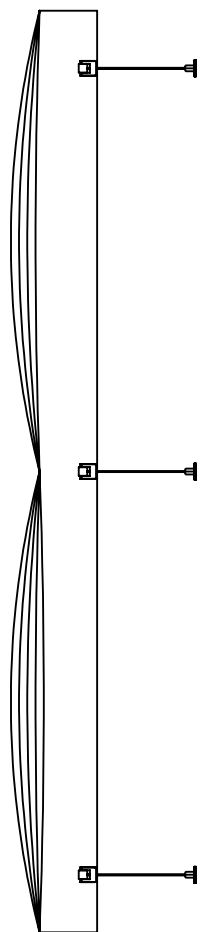
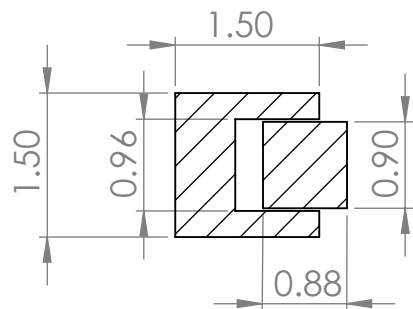
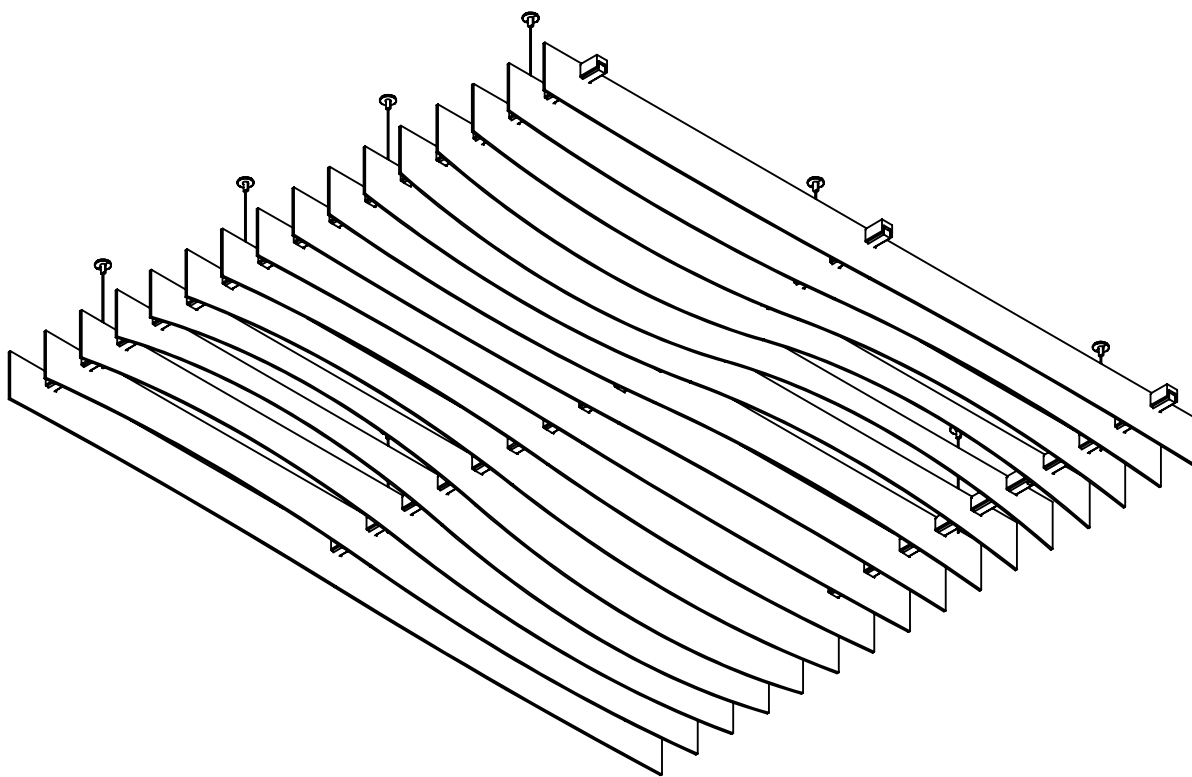
REFER TO READY TO GO DOCUMENTS FOR PART QUANTITIES, PRICING, AND KIT INFORMATION

REFER TO 3form ANCHORING SOLUTION DOCUMENT FOR ANCHORING INFORMATION AND LIMITATIONS; [WWW.3-FORM.COM/ANCHORING](http://WWW.3-FORM.COM/ANCHORING)

ALL DIMENSIONS THIS DOCUMENT BASED ON (2) 4' X 8' 3form PANELS

FOR TECHNICAL INFORMATION REFER TO THE SOLUTIONS DOCUMENT FOR THE SYSTEM SYSTEM.

FOR GAUGE COMPATABILITY INFORMATION REFER TO [WWW.3-FORM.COM/GAUGE](http://WWW.3-FORM.COM/GAUGE)



## Contour Ceiling - READY TO GO SOLUTION

NOT FOR CONSTRUCTION, DESIGN AID ONLY  
11X17 SHEET, DO NOT SCALE DRAWING  
RTG - Contour\_Ceiling - REV-001

**SYSTEM**  
LAST MODIFIED DATE: 8/26/2016