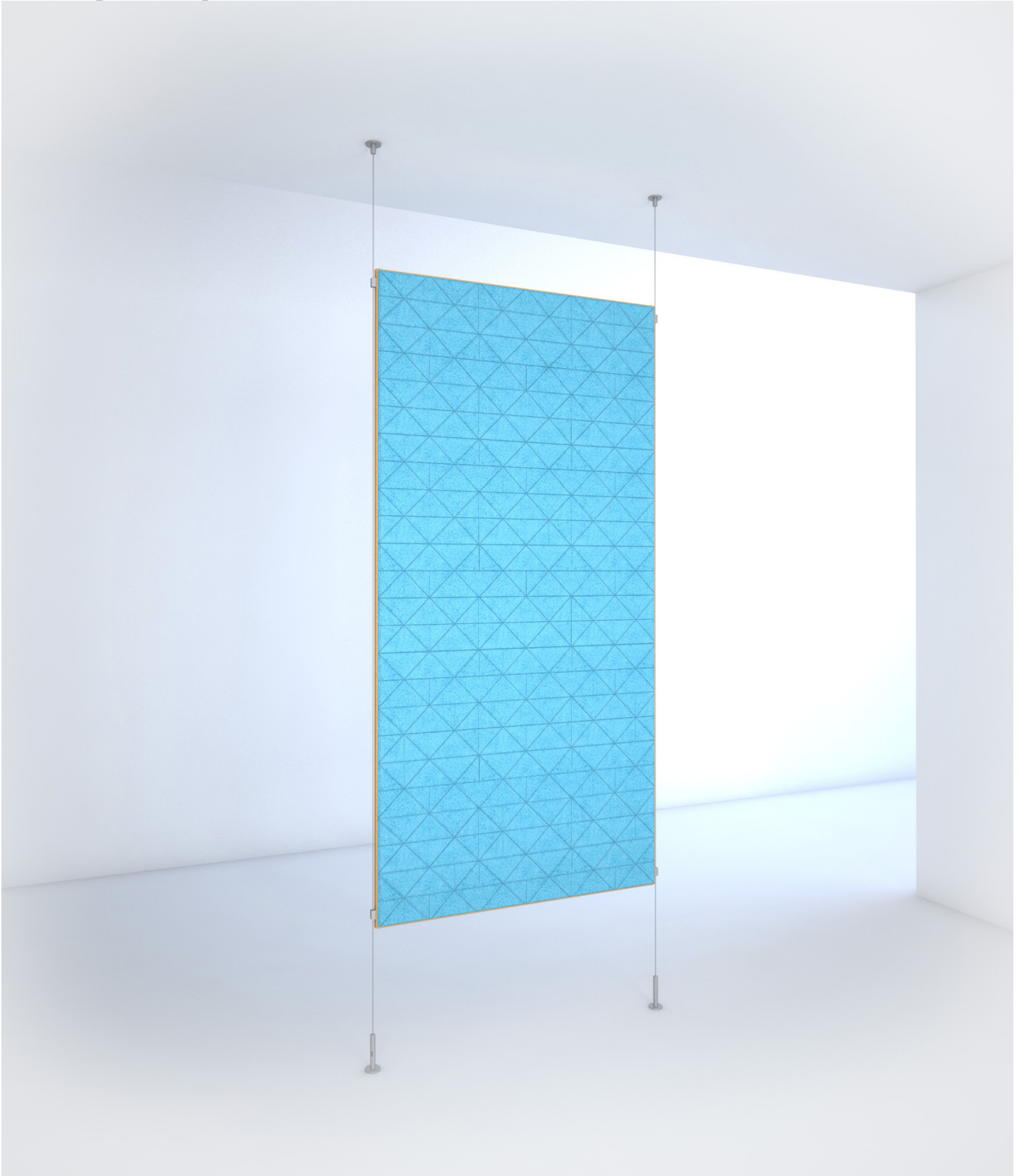


Divy

# SimpleSpec 200.51™

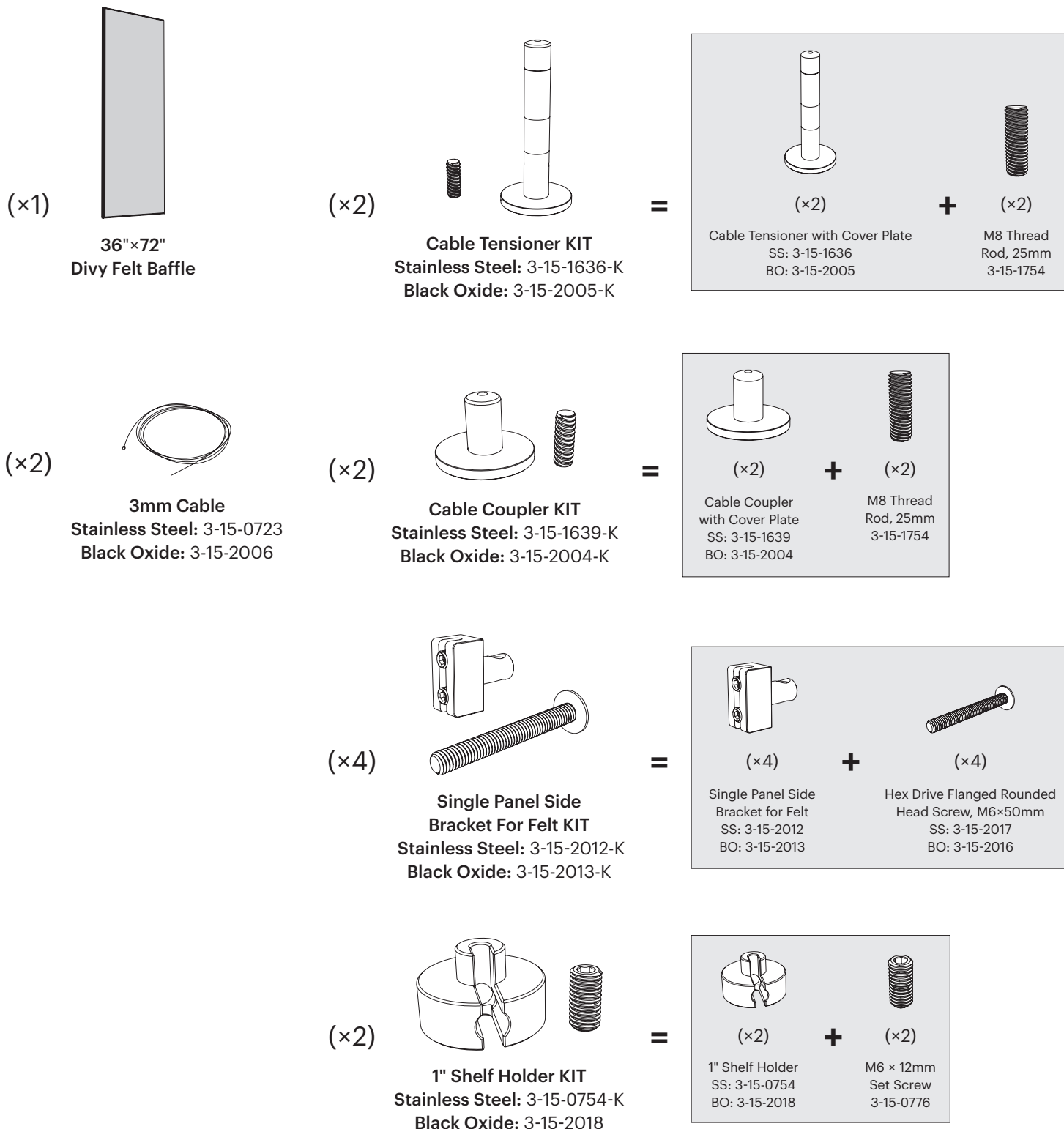
## Installation Manual



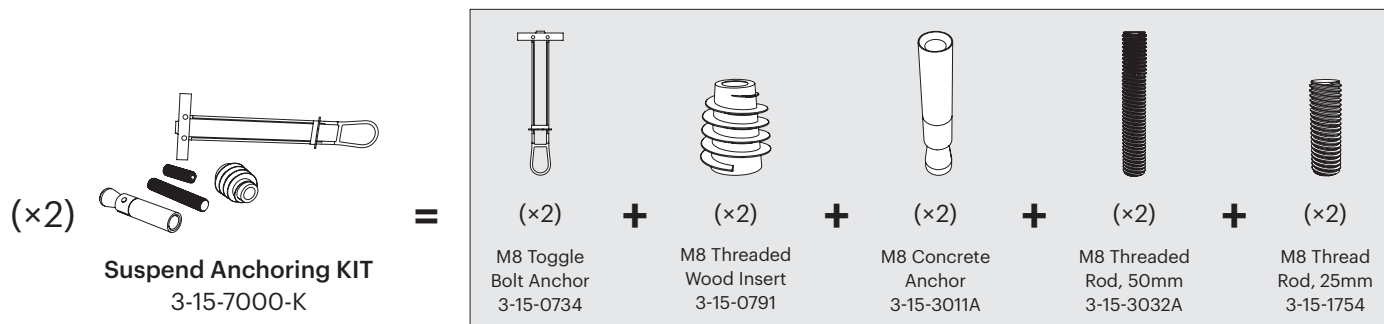
For more information, please visit [3-form.com](https://3-form.com) or call 800.726.0126

JUNE 2021 | MAN-RTG-200-51 | REV 007 © 2021 3form, Inc. All rights reserved.

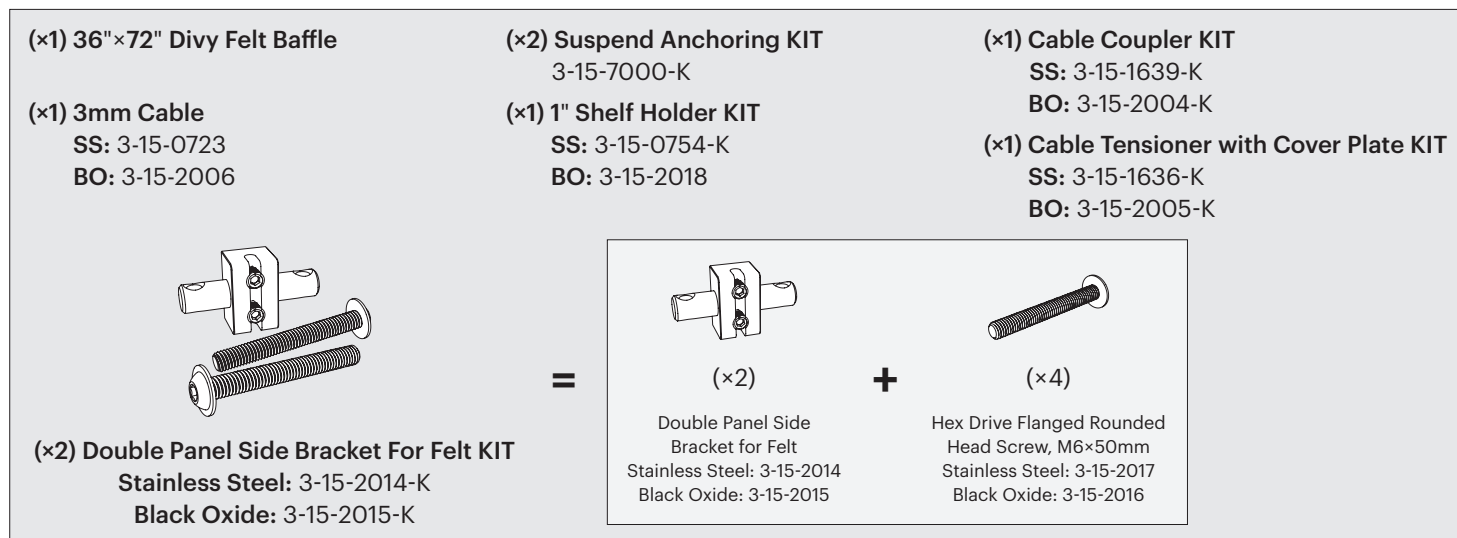
### Contents Overview



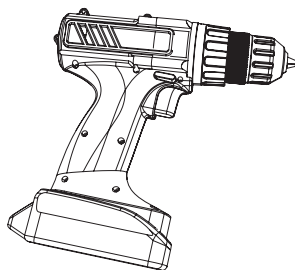
## Contents Overview cont...



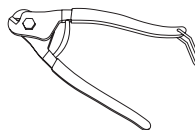
## For Each Additional Panel



## Required Tools



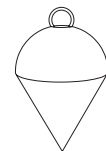
Drill

Concrete or  
Wood BitMetric Allen  
Wrenches

Cable Cutters



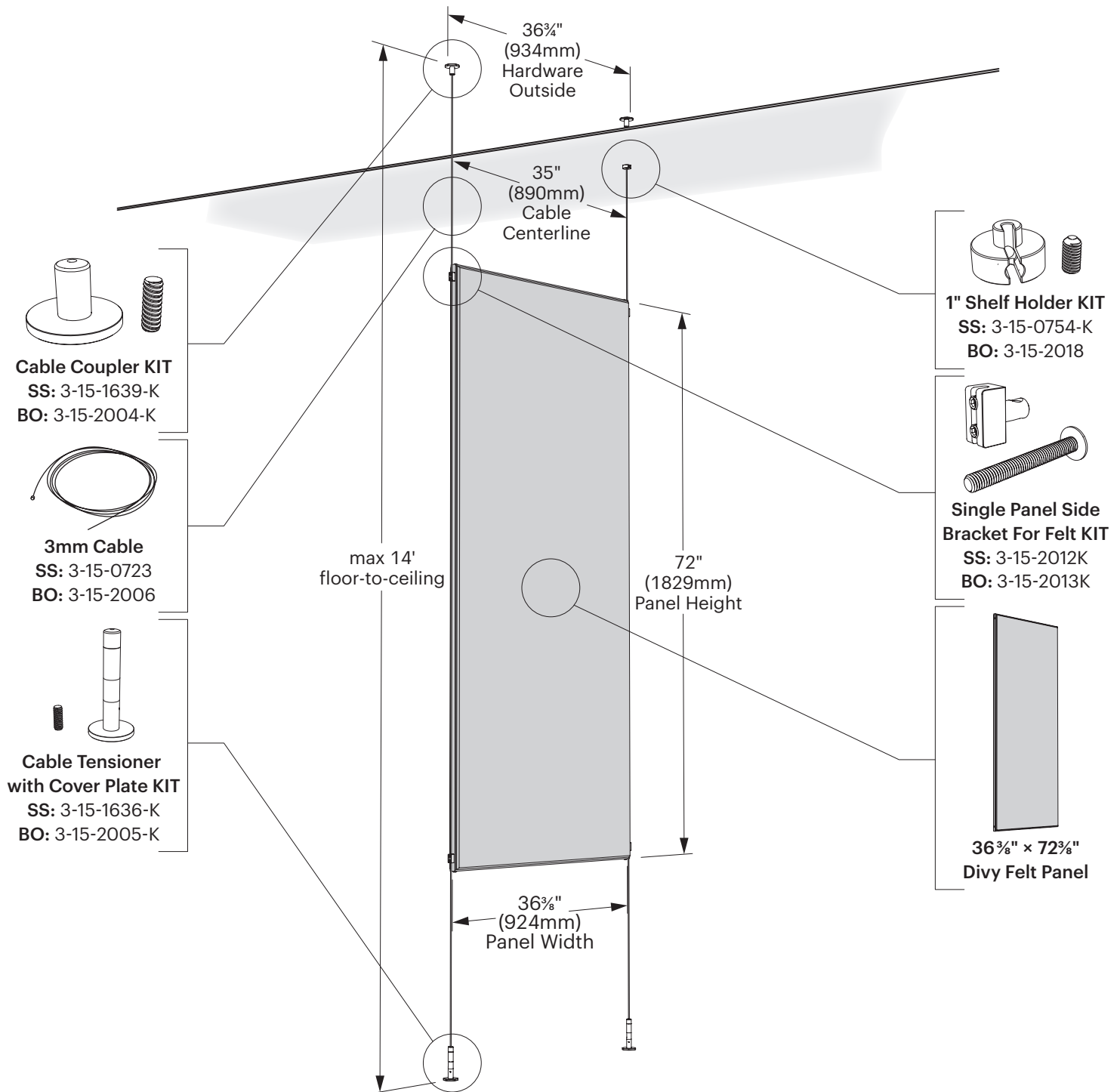
Super Glue



Plumb-bob

### Overview

SimpleSpec 200.51 provides a robust partition with the added quality of acoustical absorption. The 3form Sola Patterned Felt is complimented by a beautiful Birch Plywood Edge.

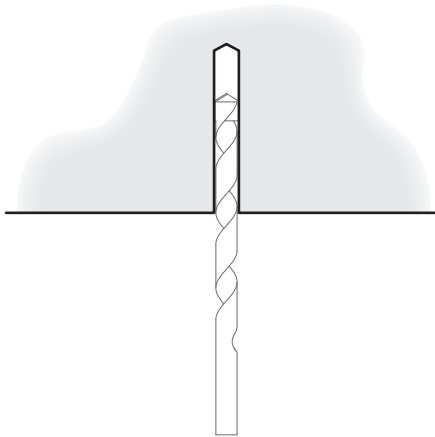


### Installation

#### 1 Install Ceiling Anchor for the First Cable Assembly

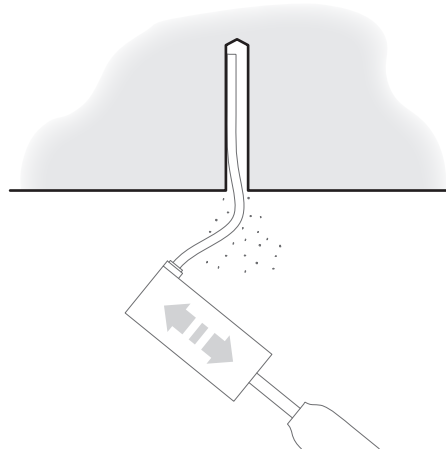
*\*If anchoring in concrete follow Steps 1a-f, if anchoring in drywall follow Steps 1g-l, if anchoring in wood follow Steps 1m-n.*

##### a Concrete Installation



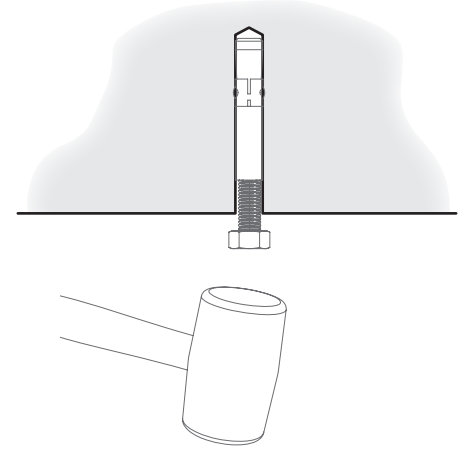
Drill Ø10mm hole, minimum 65mm deep.

##### b



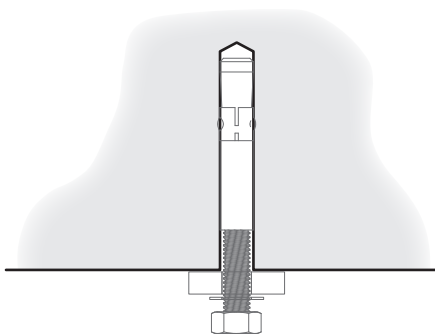
Remove drilling debris with a blowout bulb or with compressed air.

##### c



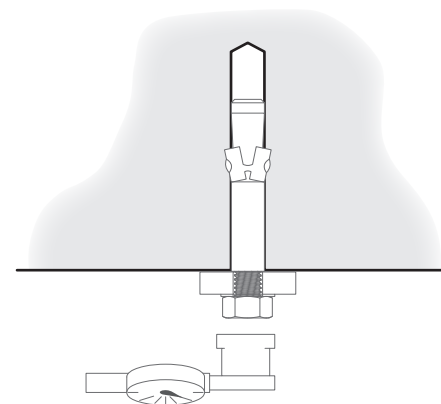
With screw in anchor (3-15-3011A), use a hammer to insert anchor.

##### d



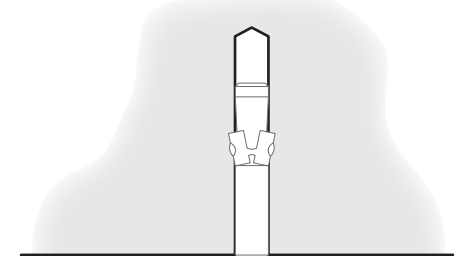
Place a washer under the screw head.

##### e



Torque the screw to 15 Nm.

##### f

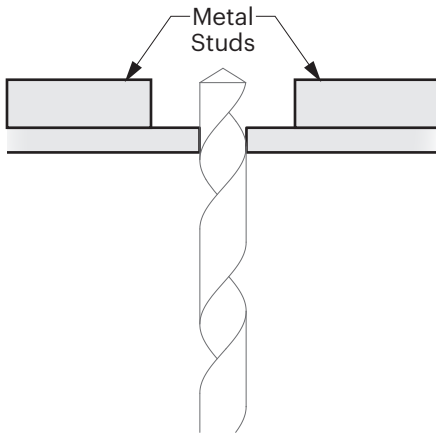


Remove screw.

### Installation

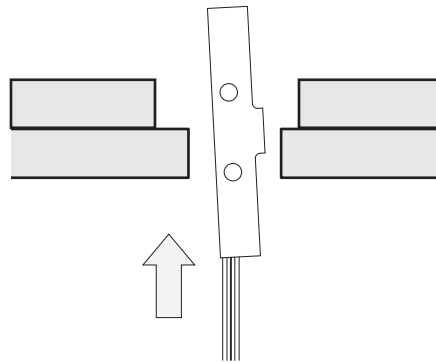
#### 1 Install Ceiling Anchor for the First Cable Assembly *cont...*

##### g Hollow Substrate Installation



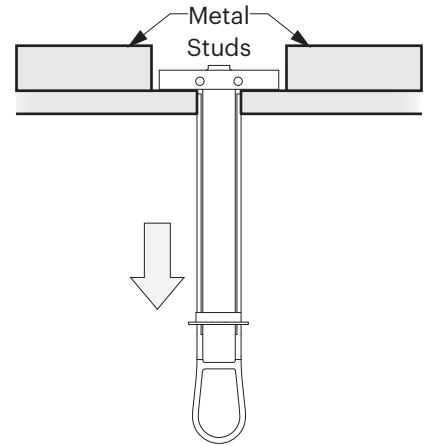
Drill Ø¾" (19mm) hole. Minimum clearance behind wall = 1⅞" (48mm)

##### h



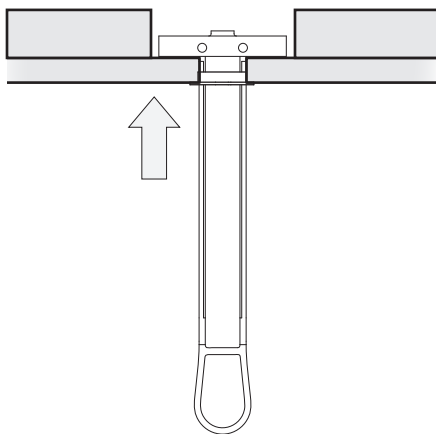
Position the metal channel parallel with the plastic legs. Insert the metal channel through the drilled hole into the wall cavity.

##### i



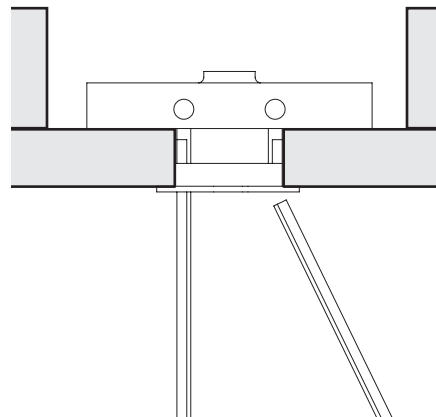
Pull the metal channel firmly against the inner wall cavity by tugging the plastic pull ring.

##### j



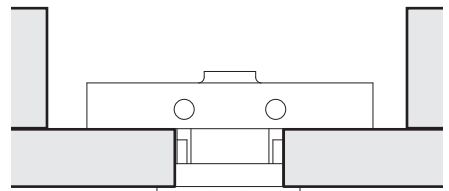
Slide the plastic cap forward along the legs until it is seated flush to the work surface.

##### k



Snap the plastic legs off flush at the plastic cap by pushing outward.

##### l

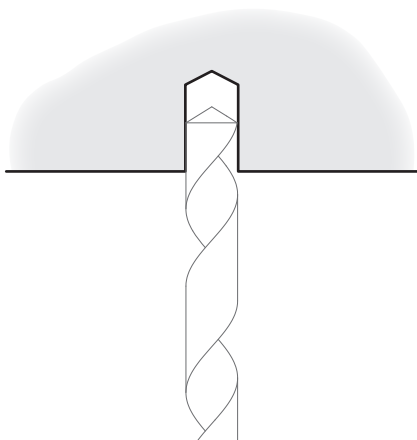


Note: Maximum torque on screw or rod is 5 ft-lb.

### Installation

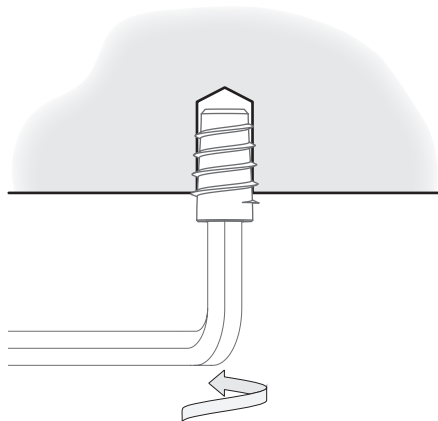
#### 1 Install Ceiling Anchor for the First Cable Assembly *cont...*

##### m Wood Installation



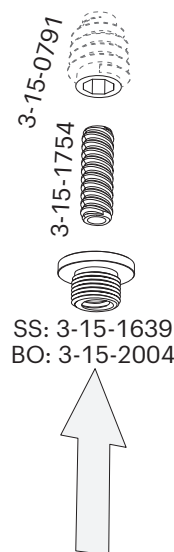
Drill  $\frac{1}{8}$ " ( $\varnothing 11.1\text{mm}$ ) hole, minimum 20mm deep.

##### n



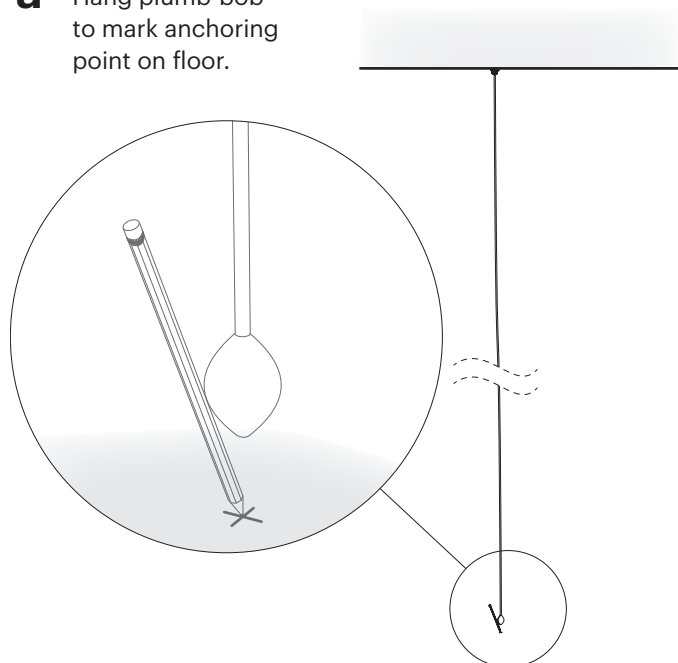
Use an Allen wrench to install the M8 Threaded Insert (3-15-0791).

##### o



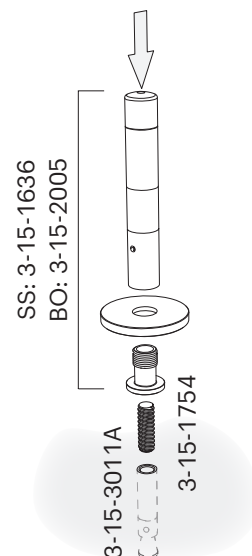
#### 2 Install Floor Anchor for the First Cable Assembly

##### a Hang plumb-bob to mark anchoring point on floor.



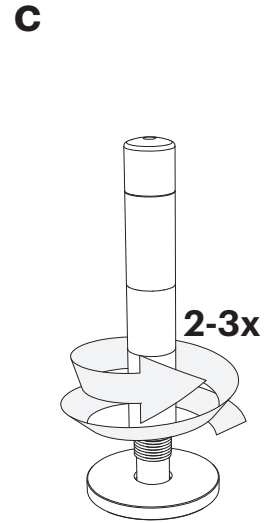
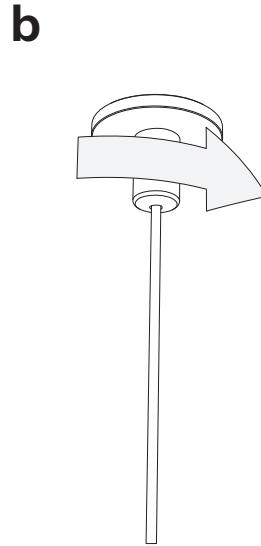
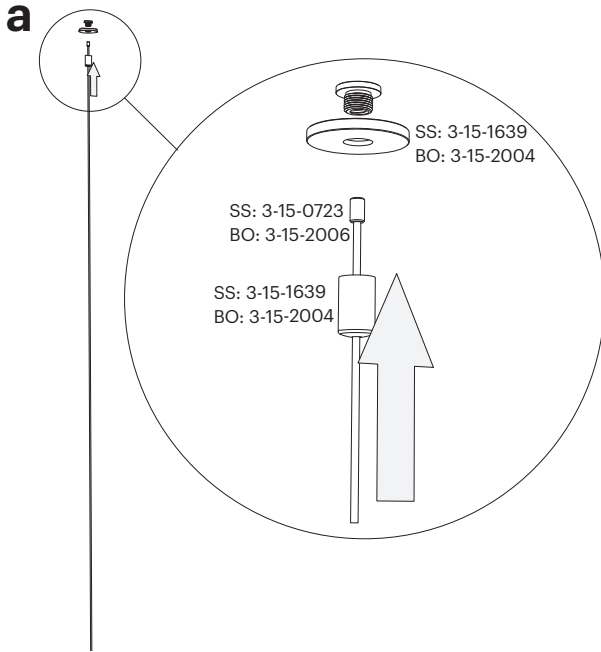
##### b If anchoring in concrete follow Steps 1a-f, if anchoring in wood follow Steps 1g-h.

##### c Attach the Cable Tensioner (SS: 3-15-1636; BO: 3-15-2005) to the floor anchor with the included M8 Threaded Rod (3-15-1754).

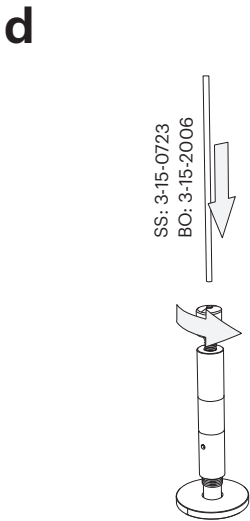


### Installation

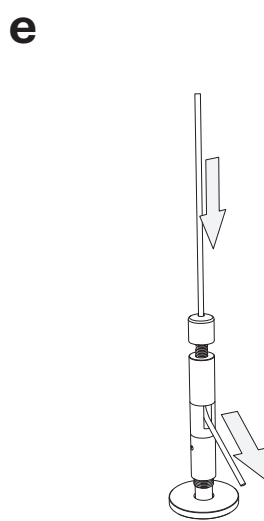
#### 3 Attach First Cable Assembly



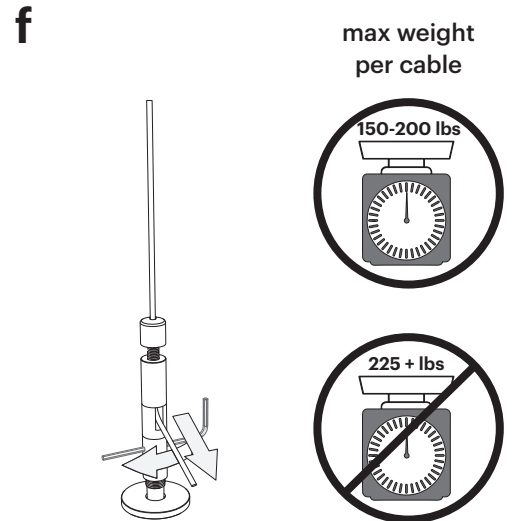
*Do not tighten yet!*



Unscrew the cap.



Pull excess cable through the side exit on the tensioner.



**Maximum Weight = 225 lbs**  
**Maximum Tension = 400 lbs**

**Hollow Substrate:**

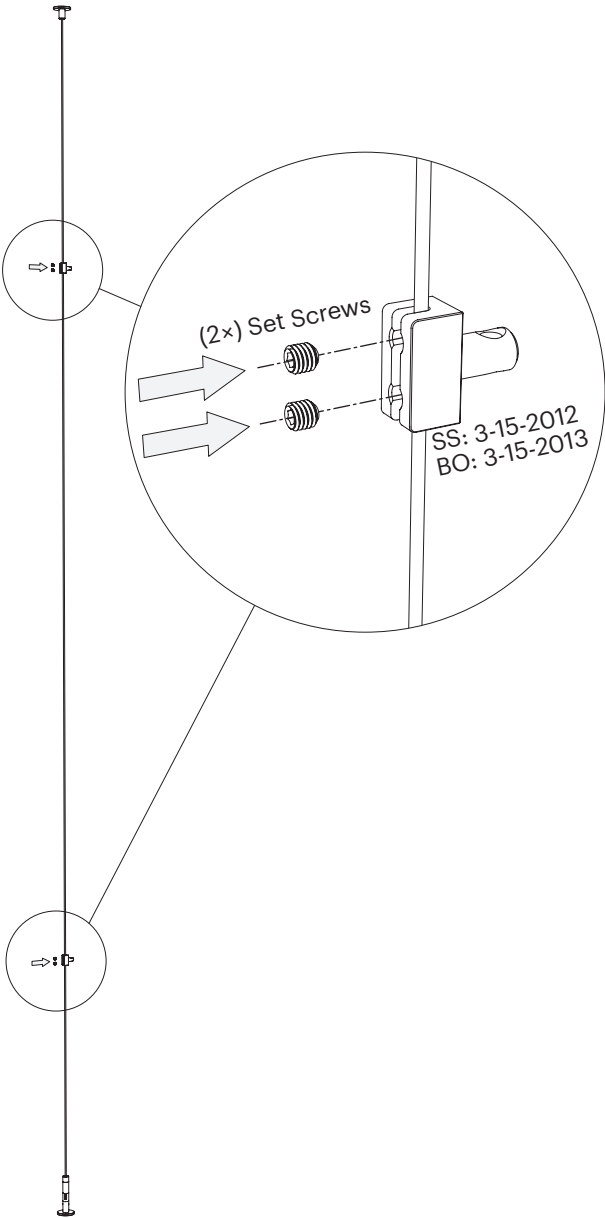
**Max Tension + Weight < 70lbs**



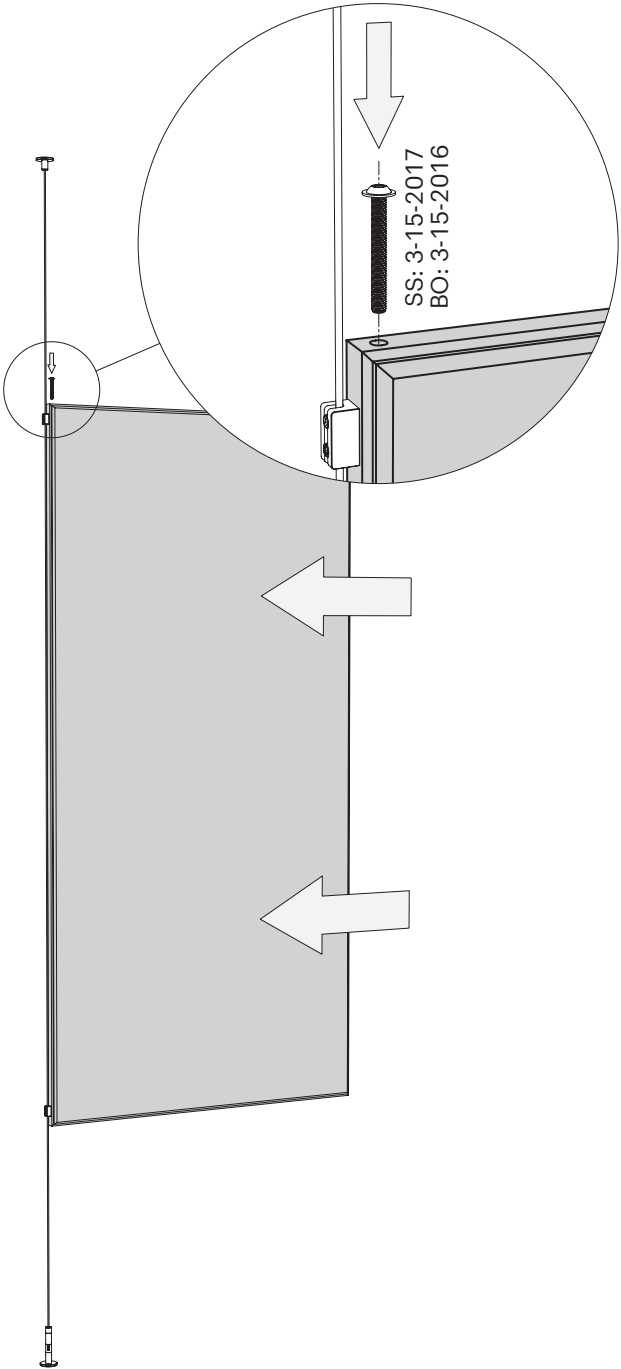
Installation

4 Dry-Fit Panel and Measure

**a** Do not tighten set screw!



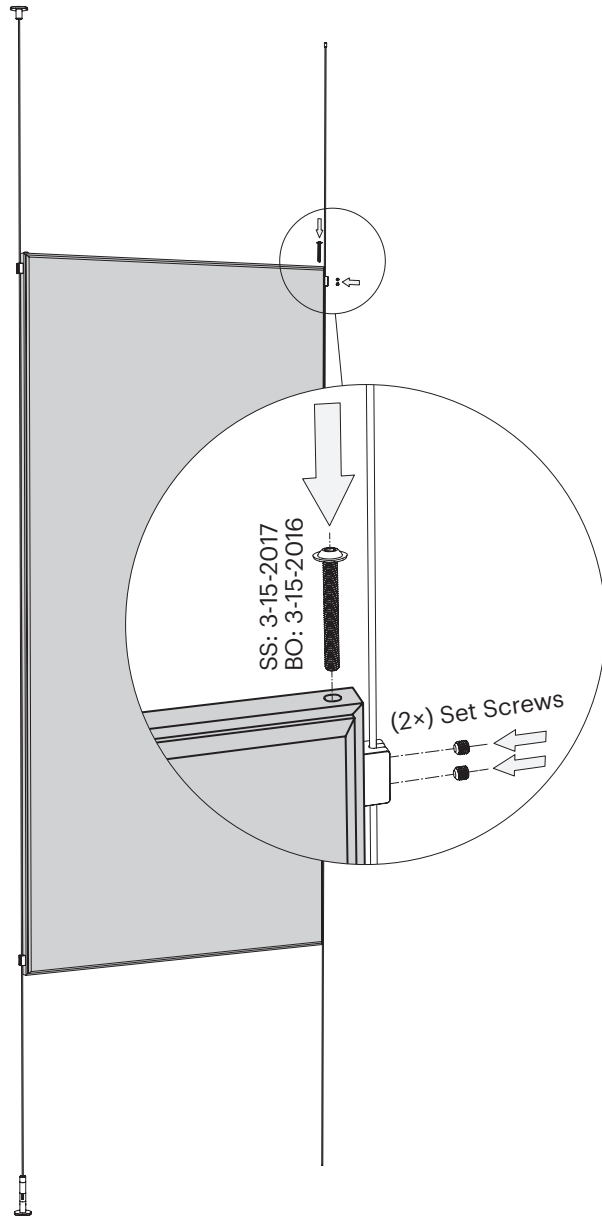
**b** Do not tighten set screws!



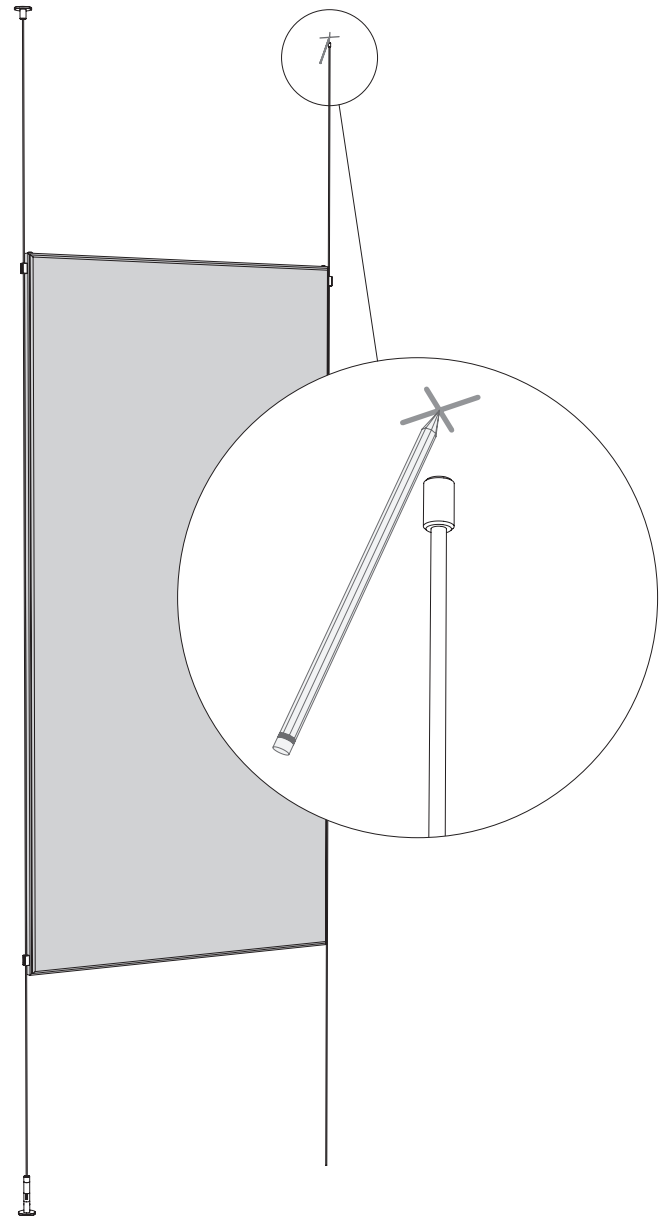
## Installation

### 4 Dry-Fit Panel and Measure *cont...*

**C** Do not tighten set screws!



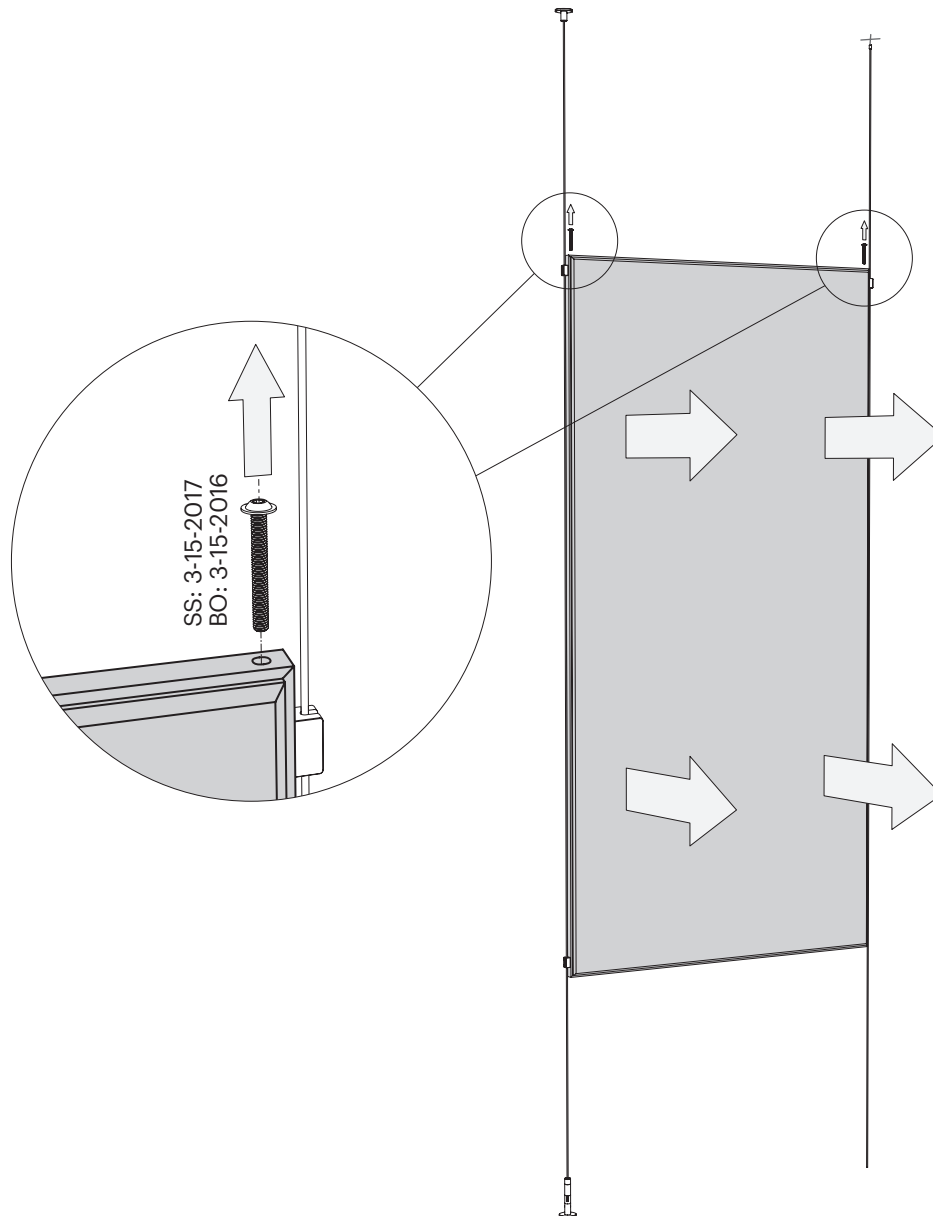
**d**



## Installation

### 4 Dry-Fit Panel and Measure *cont...*

#### e Remove Panel



## Installation

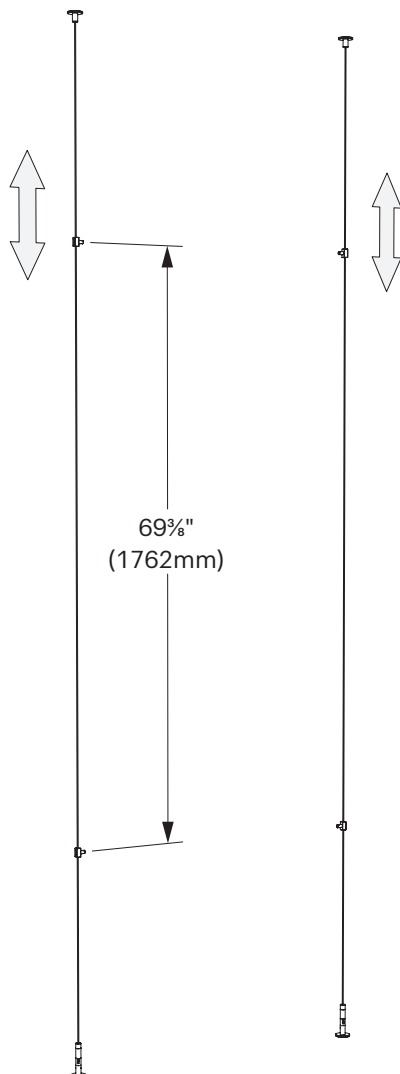
### 5 Anchor Second Cable Assembly

**a** Repeat Steps 1-3 for the Second Cable Assembly.

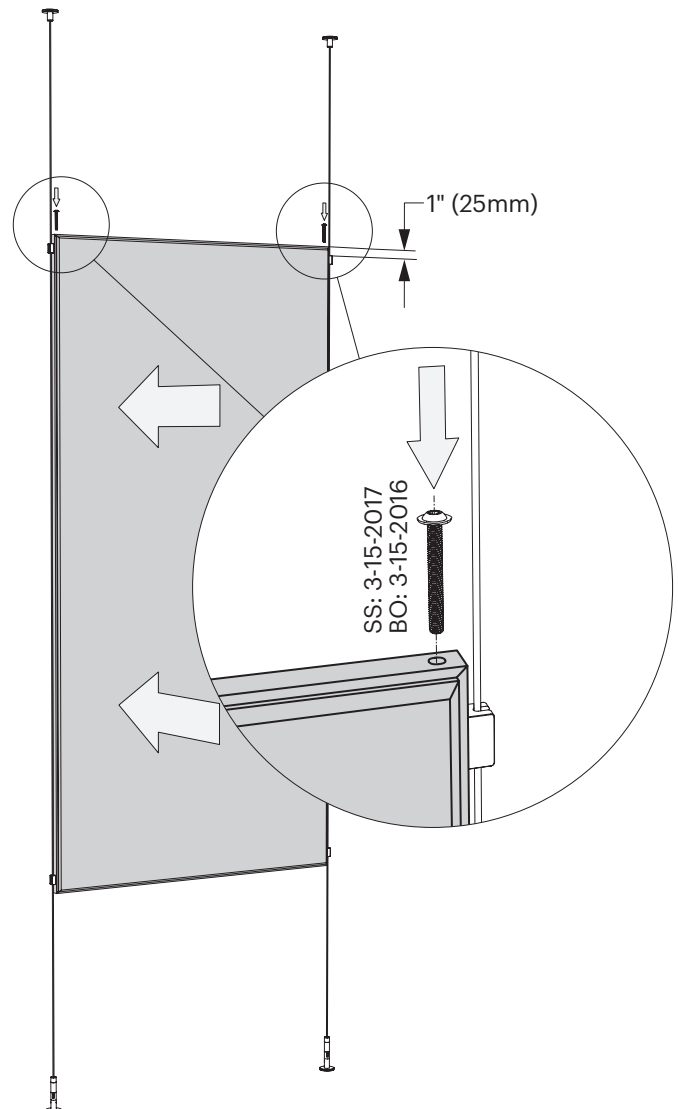
**b** Repeat Step 4 and then Steps 1-3 for each additional panel.

### 6 Attach the Panel

**a** Position the top single side brackets for felt (SS: 3-15-2012; BO: 3-15-2013) 1½" below desired location of the top of the panel. Tighten set screws to the cable (top side brackets only).



**b** Position the panel to desired location and ensure it is level. Tighten set screws to the panel on top side brackets only.

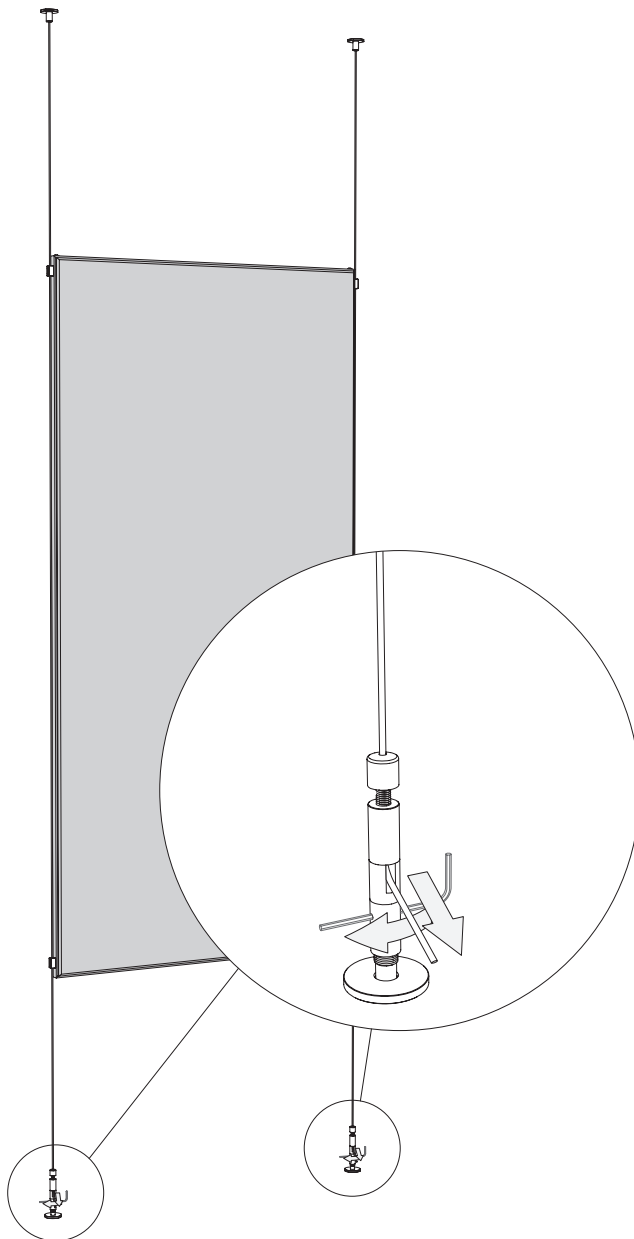


## Installation

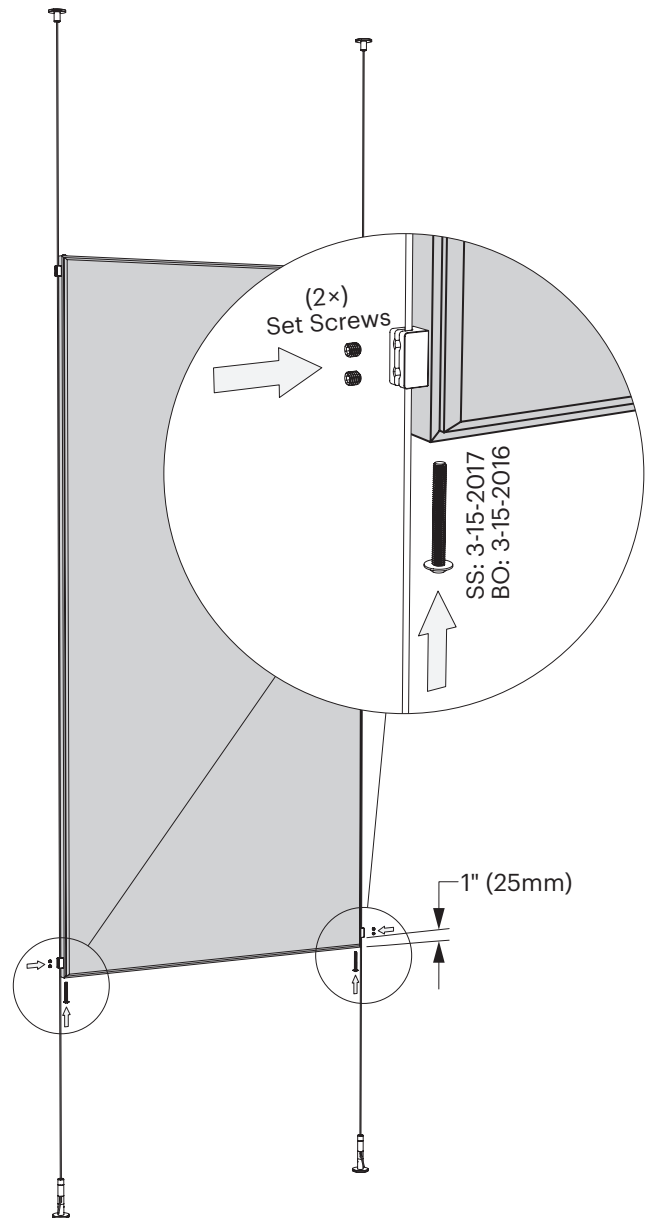
### 6 Attach the Panel cont..

#### **C** Critical Tensioning Step!

Wait to re-tension the cables as weight of the panel is applied. Re-tension the cables, pulling excess cable through the tensioner, and tighten using Allen wrench through tensioner as shown in 6c.



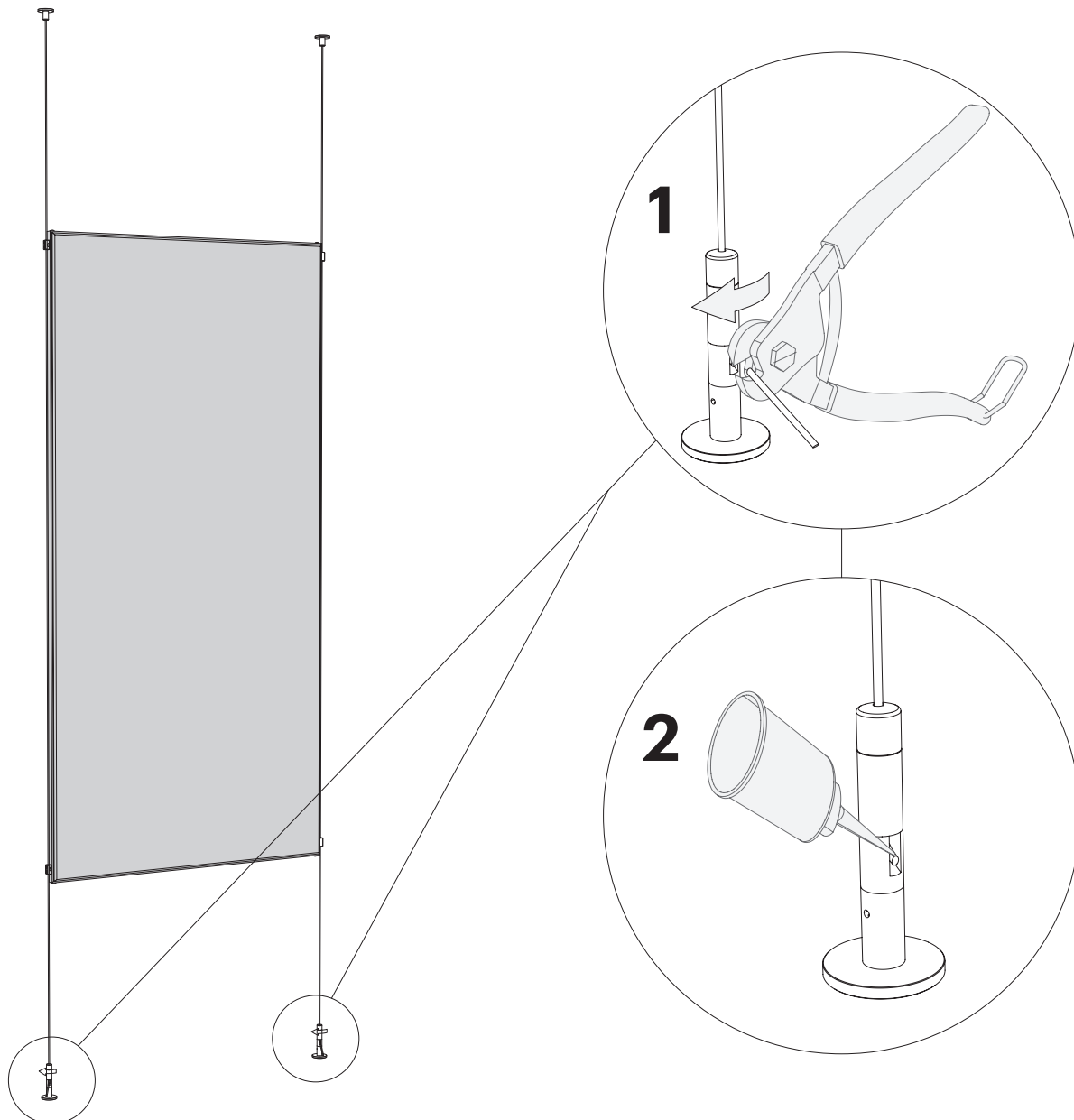
#### **d** Tighten set screws on lower side brackets once cables have been tensioned. This will prevent gapping in tension on the cables.



## Installation

### 7 Finish Tensioner Assembly

Cut cable and put a drop of super glue at end of cut cable to keep from fraying.

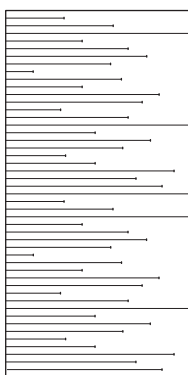


## Product Description and Specifications

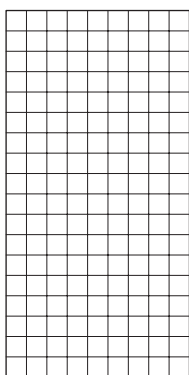
### Features and Benefits

- Variety of color options
- 6 base patterns
- Noise Reduction Coefficient (NRC) up to 0.75
- Cost-effective decorative feature
- Easy to specify
- Easy to install

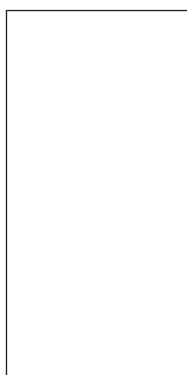
### Available Patterns



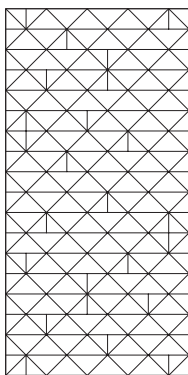
Margin



Net



Plane



Quint



Vim

### Available Finishes

Divy can be specified in a variety of color options.

See 3form's Sola Felt colors at:

<https://www.3-form.com/materials/sola-felt>

### Flammability and Smoke Test Results -

#### Building Code Approvals

Divy Panels have been independently tested and meet the criteria for approved interior finishes as described in the 2018 International Building Code®.

Test	Sola Felt 3/8"	Result
ASTM E84		
Flame Spread	50	Class B: 26-75
Smoke Generated	300	<450
CAN/ULC 102.2		
Flame Spread	75	See Building Code of
Smoke Generated	200	Canada

### Sound Absorption Test Results

Solution	Test-ASTM C423-09	Result
Divy	Noise Reduction Coefficient	0.75
Divy	Sound Absorption Average	0.76
Divy	Alpha-W	0.70H

### Panel Weight

Solution	Thickness	Weight
Divy Partition	1.5" (38.1mm)	36 lbs (16.3 kg)

### Cleaning Instructions

Divy Panels should be cleaned periodically. A regular, seasonal cleaning program will dramatically help prevent noticeable weathering and dirt build-up.

To remove airborne debris and dust, it is recommended to periodically vacuum Divy Panels. Please note the slight shedding of fibers from the Felt is normal and not indicative of any defect.

To treat liquid stains, remove spills immediately using a clean damp cotton cloth or with detergent soap and warm water. Carpet and fabric cleaners can usually be used; always test an inconspicuous area before the actual stain.

#### Do:

- Vacuum or use a soft brush to clean Divy Panels.

#### Do not:

- Use strong solvents, highly alkaline or abrasive cleaning agents.
- Do not completely saturate module with cleaning solution or water.